

Event Calendar:

- Multi-Conference Leadership Conference - February 8-9

Inside this issue:

- November Meeting **1**
- From the President **2**
- October Meeting Summary **3**
- 2018 ASCE Convention **4**
- UNL Professor of Practice Opportunity **5**
- Continuing Education Opportunities **7**

November Meeting

Date: Thursday, December 20th, 2018

Host: Nebraska Management Technical Committee

Spouses and Guests Welcome

Location:

*Taxi's Bar and Grill
1822 N 120th Street
Omaha, NE 68154*

Program: "Managing Nebraska's Fisheries"

Presenter: Dean Rosenthal, Fisheries Division Administrator Nebraska Game and Parks Commission

Times: 6:00 pm Registration and Social Hour
6:30 pm Dinner
7:00 pm Presentation

Menu/Price:

The New Velvet Chicken: Parmesan Crusted Chicken Breast on Linguine, tossed in Wild Mushroom Romano Cream Sauce

Grilled Salmon: Sweet corn & pesto risotto, asparagus, tomatoes & artichoke

PORK AU POIVRE: Pan Roasted Tenderloin, Mashed Yukon Golds, Peppercorns, Brandy Cream, Baby Green Beans

Steak Frites: Grilled Whiskey Marinated Flat Iron, Hand Cut Fries, Homemade Steak Sauce, Herb-Mustard Butter

ASCE Members \$15.00 with meal or \$10.00 without, Guests \$20.00
Payable to NEASCE at the door (cash, check, or credit card).

Life Members and **Students** are FREE....but you must register.

Registration/Deadline:

Sign up by 1:00 pm Wednesday, December 19, 2018 [HERE](#).



Greg Seib, PE, M.ASCE

From the President

Salutations, ASCE Nebraska Section! I had a great experience at the ASCE 2018 Convention in Denver, Colorado. The new ASCE Society President is now Robin Kemper, P.E., LEED AP, F.SEI, F.ASCE, who was installed at the convention. Additionally, there were some exciting announcements. The number of PDHs that are provided with an ASCE membership will be increasing from 5 to 10. The total pledges from across the nation for the Dream Big DVD and toolkit were revealed and a total of 70,000 schools will be receiving the DVD and toolkit. I'm proud to say that every elementary school, middle school, and high school in Nebraska are included in the pledges. I have a separate article in this newsletter about my experience at the ASCE 2018 Convention in Denver, so please see the article for more about the convention.

The 150th Anniversary of the completion of the transcontinental railroad by the Union Pacific and Central Pacific Railroads is May 10, 2019. I'm very pleased to announce that ASCE Nebraska Section has nominated the Union Pacific Railroad in Nebraska as a National Historic Civil Engineering Landmark and we recently received approval of our nomination by ASCE's History & Heritage Committee. Stay tuned for information in the upcoming months about ceremonies or other announcements that may accompany this great news for our Section. A special thanks goes to Shannon DeVivo for her work in coordinating the application and making this happen.

And finally, a couple of reminders to renew your ASCE membership by the end of the year and to follow ASCE Nebraska Section's social media accounts on Facebook, Twitter, Instagram, and LinkedIn. Thank you to all our members who are working hard to make these great things happen in the Nebraska Section.

Sincerely,

Greg Seib, PE, PTOE, M.ASCE

ASCE Nebraska Section President

The advertisement is a composite of several images and text blocks. On the left, there is a photograph of a modern city street with a car and buildings. Below this is a dark blue banner with white text: **"N" Street Cycle Track** and **LINCOLN, NEBRASKA**. To the right of the photograph is the logo for **MOLSSON ASSOCIATES** with social media icons and the website www.molssonassociates.com. The top right section features the **LAMP RYNEARSON** logo and text: **ENGINEERS | SURVEYORS | LANDSCAPE ARCHITECTS**, social media icons, and contact information: **402.496.2498 | LRA-inc.com**. Below this is the logo for **Thiele Geotech Inc.** with the tagline **GEO INTELLIGENCE** and *The Confidence to move you FORWARD*. A list of services includes **Site Evaluation**, **Phase I & II ESA**, **Geotechnical Exploration**, **Retaining Wall Design**, and **Construction Materials Testing**. At the bottom, it lists **GEOTECHNICAL | MATERIAL | ENVIRONMENTAL | ENGINEERING** and provides contact details for **OMAHA** (515.984.3013) and **DES MOINES** (402.556.2171), along with the website www.thielegeotech.com. On the far right, there is a photograph of a construction site with a tall drilling rig.

October Meeting Summary

Thursday evening, October 18th the Nebraska Section’s Construction Technical Group hosted a meeting. The meeting was held at the new Atlas Apartments which included a tour and presentation. The list below can be considered official documentation of attendance at the October 18th, 2018 meeting and presentation worth one (1) PDH credit.

Eli Green

Doug Kellner

Loras Klostermann

Daren Konda

Scott Loos

Jeff McClenathan

Gary Norton

Dan Pudenz

Liz Railsback

Mike Reif

Jan Sahs

Tyler Schmidt

Mike Skelnar

Ed Thiele

Matt Wieseler

Jack Woo



SCHEMMER.COM | 402.493.4800



6910 Pacific Street Suite 310 Ofc: 402.553.0234
Omaha NE 68106-1046 Fax: 402.553.0201

Providing Structural Engineering (and related) Solutions

InfraStructure: IS Bridges IS Buildings IS Precast Detailing
IS Construction/Value Engineering IS Field Inspection/Observation
IS Information/Technology Solutions & Asset Management Support

Bringing ground improvement out of the Stone Column Age.



Let us tailor a Geopier® solution to your unique, local soil conditions. Contact your local geotechnical engineer.

Deanna Chambers, P.E.
email: dchambers@groundimprovementeng.com
call: 402.651.1673 web: groundimprovementeng.com

ASCE 2018 Convention

By: By Greg Seib, PE, PTOE, M.ASCE

On October 12-15, I got the opportunity to go the ASCE 2018 Convention in Denver, Colorado. The opening keynote speaker was Dirk Ahlborn, the CEO of Hyperloop Transportation Technologies. For anyone unfamiliar, a hyperloop is a passenger capsule powered by a linear induction motor that travels up to 760 MPH in a low-pressure tube. Potential hyperloops are being considered in several locations worldwide, including between Los Angeles and San Francisco, California. Dirk's presentation on hyperloops was a fascinating look at the future of transportation and the huge opportunities for civil engineers that will accompany such projects.

The breakout sessions I attended covered a range of topics including professional development and the challenges facing the civil engineering profession. Other sessions were presentations of projects from all over the country. Some of the most interesting presentations were "Project Neon", which is the state of Nevada's largest public works project and an expansion of the subway system in New York City that cost \$20 billion.

I also noted a few updates specific to ASCE that were announced at the convention:

- * Check out the ASCE Career Connections website and look at results from the ASCE 2018 Salary Survey.
- * The number of PDHs that are included with ASCE membership will be increasing from 5 to 10.
- * A total of 70,000 schools will be receiving the Dream Big DVD and Toolkit. This includes every public school in Nebraska and any private schools that received donations from our members.
- * ASCE's new President is Robin Kemper, P.E., LEED AP, F.SEI, F.ASCE.

Attending the ASCE 2018 Convention was a great experience. Next year the ASCE 2019 Convention will be held in Miami, Florida.



UNL Professor of Practice Position

The University of Nebraska-Lincoln (UNL), Department of Civil Engineering invites applications for an open, non-tenure track, Assistant Professor of Practice in Civil Engineering position. We are looking for an individual who is dedicated to being a leader in educational innovation, curriculum development, and pedagogy. The UNL College of Engineering is committed to increasing the diversity of its faculty and seeks to attract and retain a high performing and diverse workforce in which employees' differences are respected and valued to better meet the varying needs of the diverse populations we serve. The college fosters a diverse and inclusive work environment that promotes collaboration so that all individuals are able to participate and contribute to their full potential.

Successful candidates will be expected to teach classes and manage teaching labs in the target areas of either Transportation Engineering, Geotechnical/Materials Engineering, and/or Structural Engineering. Candidates applying for this position are expected to be significantly involved in the Department and College's teaching mission and teach a variety of courses at undergraduate and graduate levels. The successful candidate will be responsible for developing course materials, lecturing, holding office hours, preparing and grading assignments and exams, and managing and grading class projects. In addition, the successful candidate will be expected to participate in a variety of out-of-class activities that address the teaching mission, such as course scheduling, outreach and student mentoring. This appointment is intended for an individual who is dedicated to being a leader in educational innovation, curriculum development, and pedagogy.

The Department of Civil Engineering consists of approximately 30 tenure/tenure-track faculty, 500 undergraduate students, and 130 graduate students with an ABET/EAC accredited undergraduate curriculum and advanced programs leading to M.S. and Ph.D. degrees. Additional information about the Department and College of Engineering can be found at <http://engineering.unl.edu/civil> and <http://engineering.unl.edu>. The successful candidate will be primarily located on City Campus in Lincoln. The UNL College of Engineering currently has over 200 faculty members and is embarking on a period of unprecedented growth including hiring of an additional 100 faculty. Having joined the Big Ten Conference and the concurrent Committee on Institutional Collaboration, UNL and the College of Engineering are on track to make dramatic advances in academic quality and research prowess. This position offers a tremendous opportunity to help shape the future of this organization as it becomes established among the elite engineering programs in the country.



Omaha 402.333.5792
Lincoln 402.479.2200
Grand Island 308.384.1032

www.benesch.com



Bridging the gap between
idea + achievement



Omaha 402.399.1000

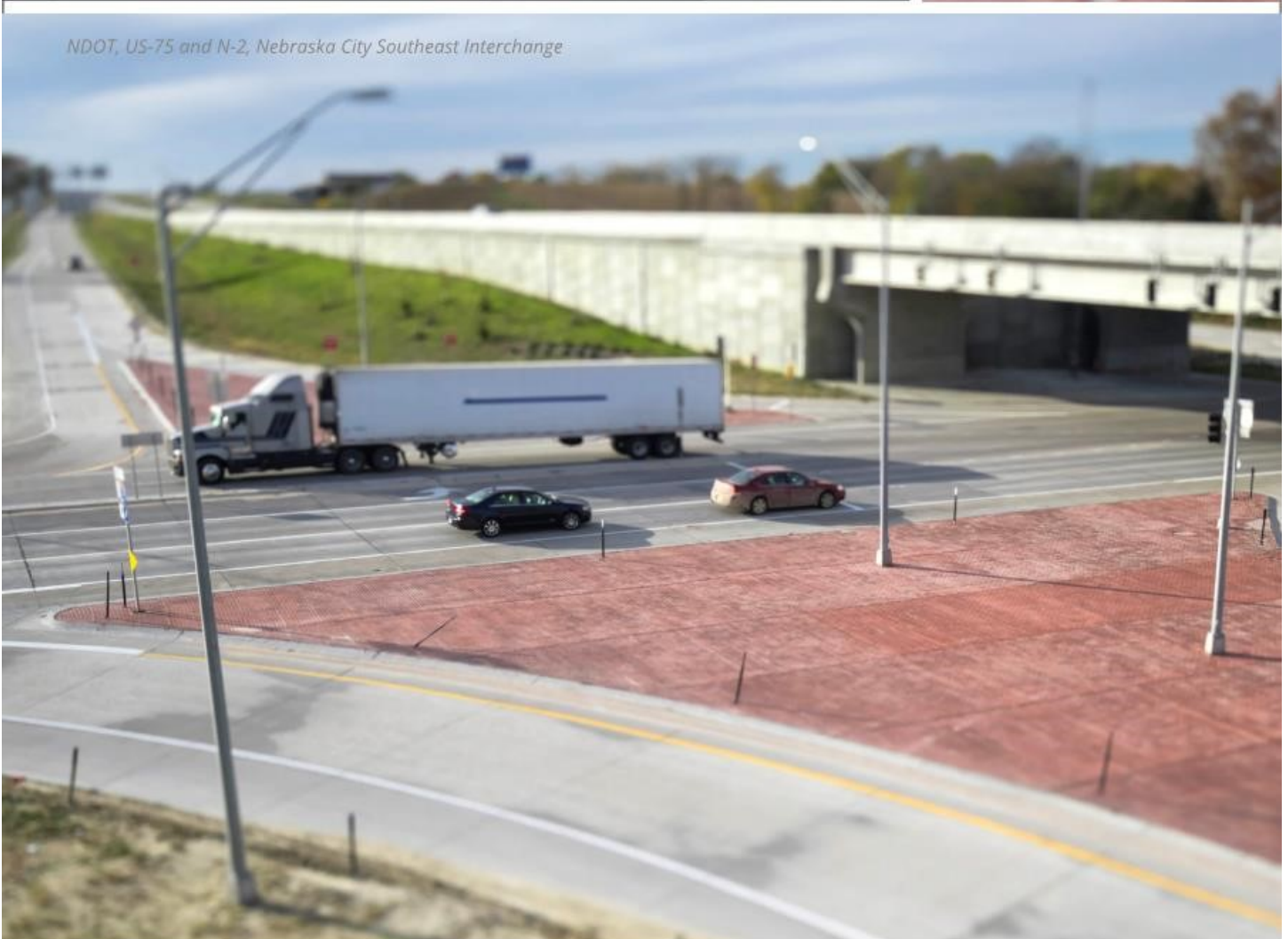
hdrinc.com



Improving Our World One Project at a Time



NDOT, US-75 and N-2, Nebraska City Southeast Interchange



olsson

Same great company. Just a shorter name. We're Olsson (formerly Olsson Associates), a nationally recognized engineering and design firm that adds purpose to every project we complete.
olsson.com

Upcoming Events and Seminars

Region	Program	Full Dates	City/ State
3, 6, 7	Multi-Region Leadership Conference	Feb. 8-9, 2019	Dallas, TX

ASCE Continuing Education

ASCE currently holds more than 300 live webinars annually and has available more than 400 on-demand webinars covering a wide variety of technical and management topics. To access these webinars, see the following links below:

ASCE's [live webinars](#) provide cost-effective training for large and small groups. Use Promo Code **WEBNEBSEC** to secure your preferred rate.

ASCE's [on-demand webinars](#) provide real-world knowledge and convenient delivery to fit your demanding schedule. Use Promo Code **WEBNEBSEC** to secure your preferred rate.

civil
environmental
geotechnical
structural
land survey

thompson, dressen & domer, inc.
Consulting Engineers and Land Surveyors

www.tdco.com
402.330.8860 Omaha
605.951.0886 Sioux Falls



**American Society of Civil
Engineers Nebraska Section**

www.neasce.org

**The Nebraska Section of ASCE
is an active organization of over
600 members who are diverse
in practice & geography. ASCE
represents more than 150,000
civil engineers nationwide and
is America's oldest national
engineering society.**



2018-2019 NEASCE Officers

President

Greg Seib, P.E., M.ASCE
Olsson Associates
402-458-5037
gseib@olssonassociates.com

President-Elect

Elizabeth Kreher, E.I., A.M.ASCE
Lamp, Rynearson & Associates
Elizabeth.kreher@lra-inc.com

Vice President

Brandon Gardels, P.E., M.ASCE
HDR
402-399-1361
Brandon.gardels@hdrinc.com

Past President

Matt Hubel, P.E., M.ASCE
The Schemmer Associates, Inc.
402-493-4800
mhubel@schemmer.com

Treasurer

Ian Plummer, E.I., A.M.ASCE
The Schemmer Associates, Inc.
402-493-4800
iplummer@schemmer.com

Secretary

Isabella Walsh, E.I., A.M.ASCE
HDR
402-392-8600
Isabella.walsh@hdrinc.com

Director

Marie Stamm, P.E., M.ASCE
The Schemmer Associates, Inc.
402-493-4800
marie.asce@gmail.com

Director

Mike Sklenar, PE, M.ASCE

The Nebraska Civil Engineer

c/o Tyler Schmidt
Infrastructure, LLC
6910 Pacific Street, Suite 310
Omaha, NE 68106

Thank you to the businesses that support this
newsletter through their contributions.

For underwriting information, contact Tyler
Schmidt, Fundraising Chair, at 402-553-0234
x120 or tschmidt@is-ecg.com

Deadline for articles to be published in the January newsletter will be
January 11. Email articles to Tyler Schmidt at tschmidt@is-ecg.com